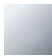


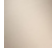




36 200 985

- Drehumstellung
- Rosette 60 x 60 mm



|   |                                       |               |
|---|---------------------------------------|---------------|
|  | Chrom                                 | 36 200 985-00 |
|  | Platin gebürstet                      | 36 200 985-06 |
|  | Messing gebürstet<br>(23kt Gold)      | 36 200 985-28 |
|  | Champagne<br>gebürstet (22kt<br>Gold) | 36 200 985-46 |
|  | Champagne (22kt<br>Gold)              | 36 200 985-47 |
|  | Dark Platinum<br>gebürstet            | 36 200 985-99 |

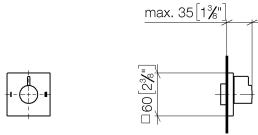
**Benötigtes Zubehör**



- UP-Zweiwege-Umstellung -** 35 202 970 90
- Max. Einbautiefe 160 mm
  - Min. Einbautiefe 85 mm

36 200 985

mm [inches]



**Durchflussdiagramm**

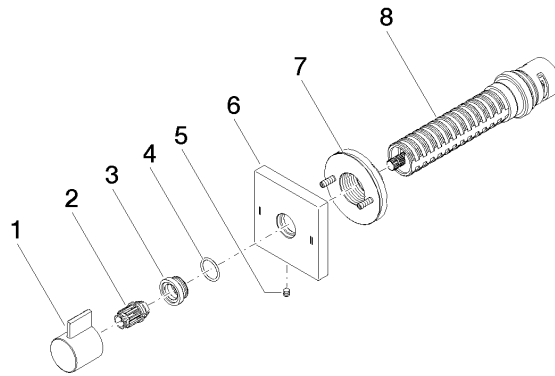


**Zertifikate**

LGA\_38379.

WRAS\_2307045.

36 200 985



### Ersatzteilstückliste

| Nr. | Artikelnummer      | Benennung  | Verbaumenge | Lieferzeit |
|-----|--------------------|------------|-------------|------------|
| 1   | 09 20 98 002-00    | Griff      | 1           | 10         |
| 2   | 09 12 12 005 90    | Rastbuchse | 1           | 2          |
| 3   | 09 12 12 043-00    | Aufnahme   | 1           | 10         |
| 4   | 09 14 10 017 90    | Dichtung   | 1           | 2          |
| 5   | 09 31 11 294 90    | Stift      | 1           | 2          |
| 6   | 09 27 98 037-00    | Rosette    | 1           | 10         |
| 7   | 90 21 02 181 00 90 | Scheibe    | 1           | 2          |
| 8   | 90 90 03 304 10 90 | Umstellung | 1           | 2          |